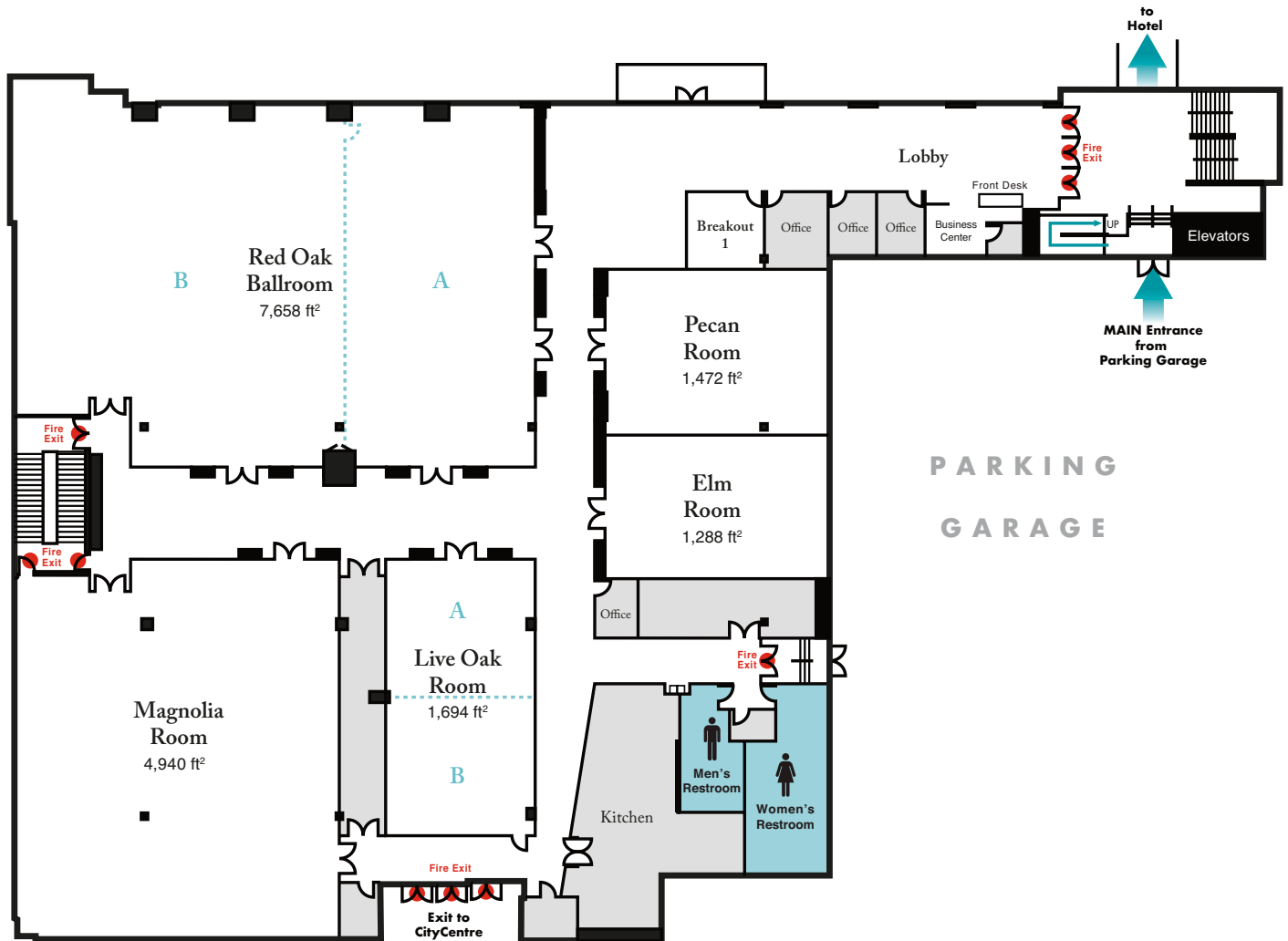




SPACE CONFIGURATION - HOUSTON/CITYCENTRE



Houston/CC	Sq. Ft.	Room Dimensions	Theatre	Classroom	Rounds 60" 8 per	Rounds 72" 10 per	Semi Circle 5 per	U-Shape
Red Oak Ballroom	7,658	106 x 74	476	286	384	460	240	70
• Red Oak Ballroom - A	2,923	40 x 74	180	108	144	180	90	48
• Red Oak Ballroom - B	4,735	66 x 70	274	164	224	260	140	54
Pecan	1,472	32 x 46	48	28	32	40	20	18
Elm	1,288	28 x 46	42	24	32	40	20	18
Live Oak	1,694	30 x 56	90	54	64	80	40	34
• Live Oak - A	847	30 x 28	20	12	16	20	10	12
• Live Oak - B	847	30 x 28	20	12	16	20	10	12
Magnolia	4,940	76 x 65	372	224	304	360	190	60
Breakout - 1	121	11 x 11	6	8	8	10	5	-

NOTE: All seating capacity numbers have been derived from MPI formula standards for spacing. Additional room sets and subsequent occupancies are available. Simply call or email with questions. The use of staging, bars, dance floors, etc., may lower total occupancies.