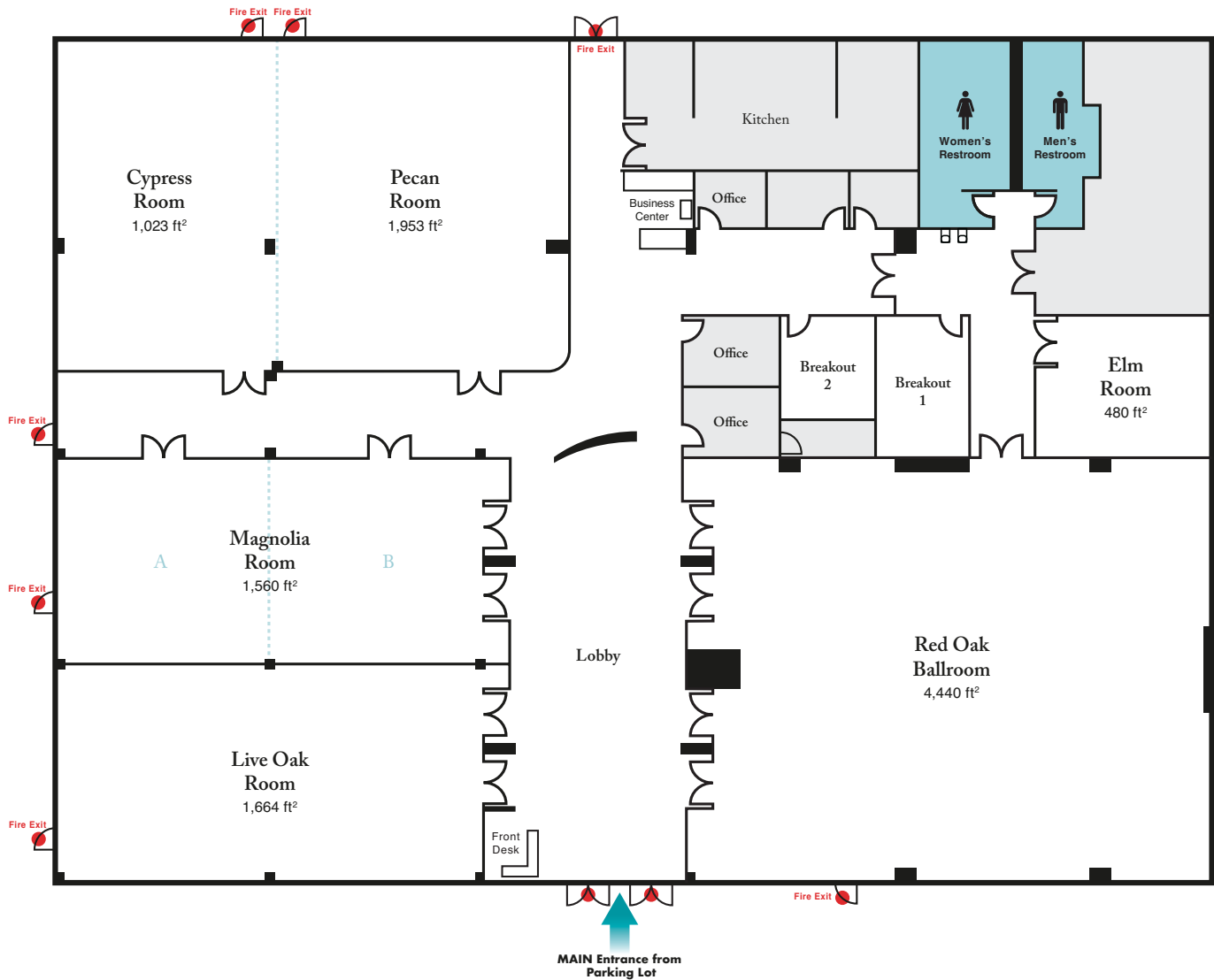




SPACE CONFIGURATION - AUSTIN



Austin	Sq. Ft.	Room Dimensions	Theatre	Classroom	Rounds 60" 8 per	Rounds 72" 10 per	Semi Circle 5 per	U-Shape
Red Oak Ballroom	4,440	60 x 74	270	162	248	260	165	56
Live Oak	1,664	32 x 52	84	50	64	80	65	36
Magnolia	1,560	30 x 52	80	48	64	80	40	30
• Magnolia - A	720	30 x 24	34	20	16	20	10	18
• Magnolia - B	840	30 x 28	44	26	32	40	20	22
Cypress	1,023	22 x 46.5	48	28	32	40	20	22
Pecan	1,953	42 x 46.5	100	54	64	80	40	30
• Cypress + Pecan	2,976	64 x 46.5	140	84	112	140	70	36
Elm	480	20 x 24	12	8	8	10	5	10
Breakout - 1	240	12 x 20	10	4	8	10	5	6
Breakout - 2	121	11 x 11	8	4	8	10	5	-

NOTE: All seating capacity numbers have been derived from MPI formula standards for spacing. Additional room sets and subsequent occupancies are available. Simply call or email with questions. The use of staging, bars, dance floors, etc., may lower total occupancies.