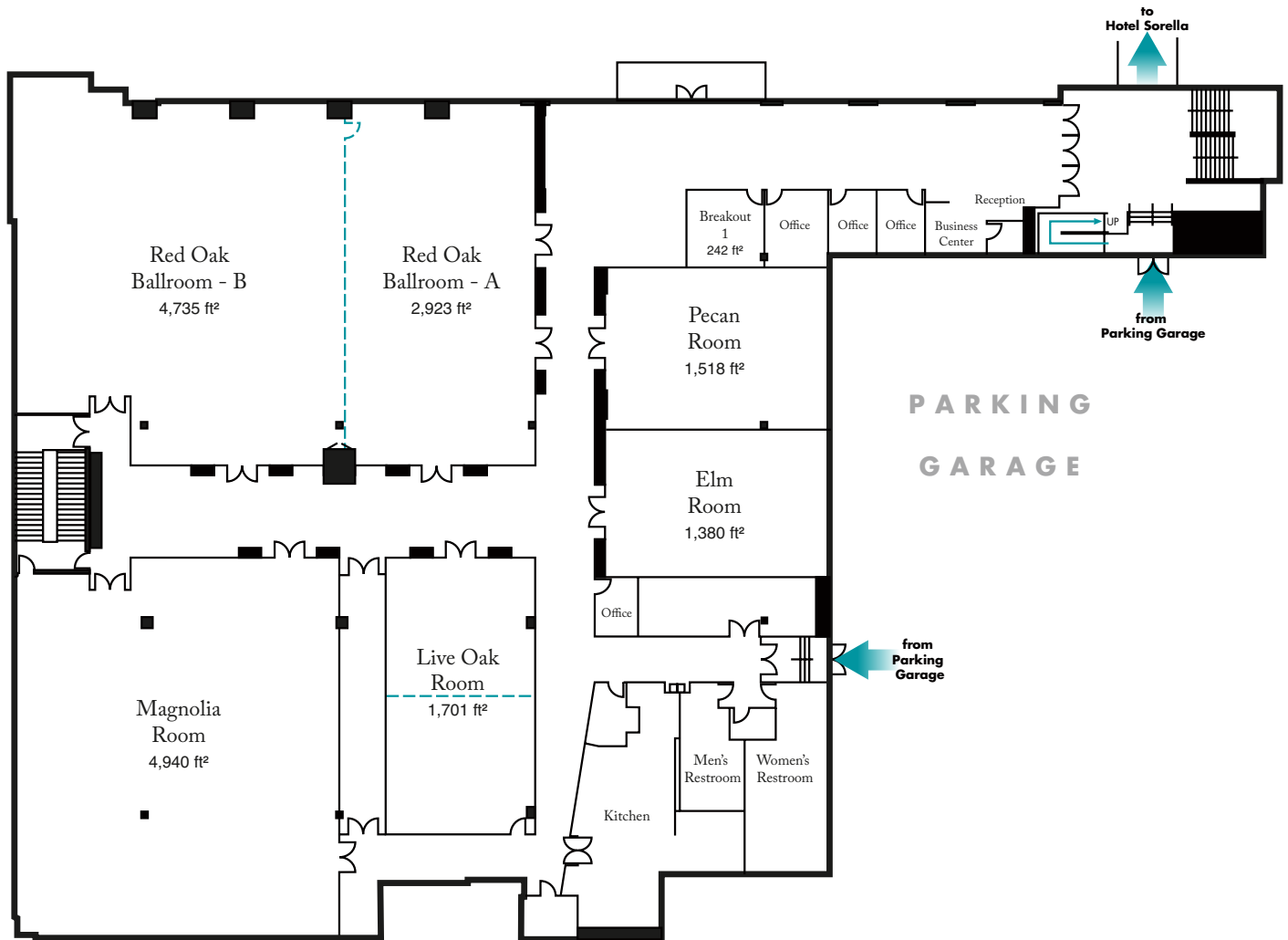




SPACE CONFIGURATION - HOUSTON/CITYCENTRE



Houston/CC	Sq. Ft.	Room Dimensions	Theatre	Classroom	Rounds 60" 8 per	Rounds 72" 10 per	Semi Circle 5 per	U-Shape
Red Oak Ballroom - A-B	7,658	106 x 74	638	382	448	430	280	120
Red Oak Ballroom - A	2,923	40 x 74	244	146	168	160	105	60
Red Oak Ballroom - B	4,735	66 x 70	395	236	280	260	175	98
Pecan	1,518	46 x 33	110	70	80	50	50	28
Live Oak	1,701	30 x 56	142	86	104	90	65	36
Magnolia	4,940	76 x 65	412	248	288	270	180	102
Elm	1,380	46 x 30	100	60	70	50	50	24